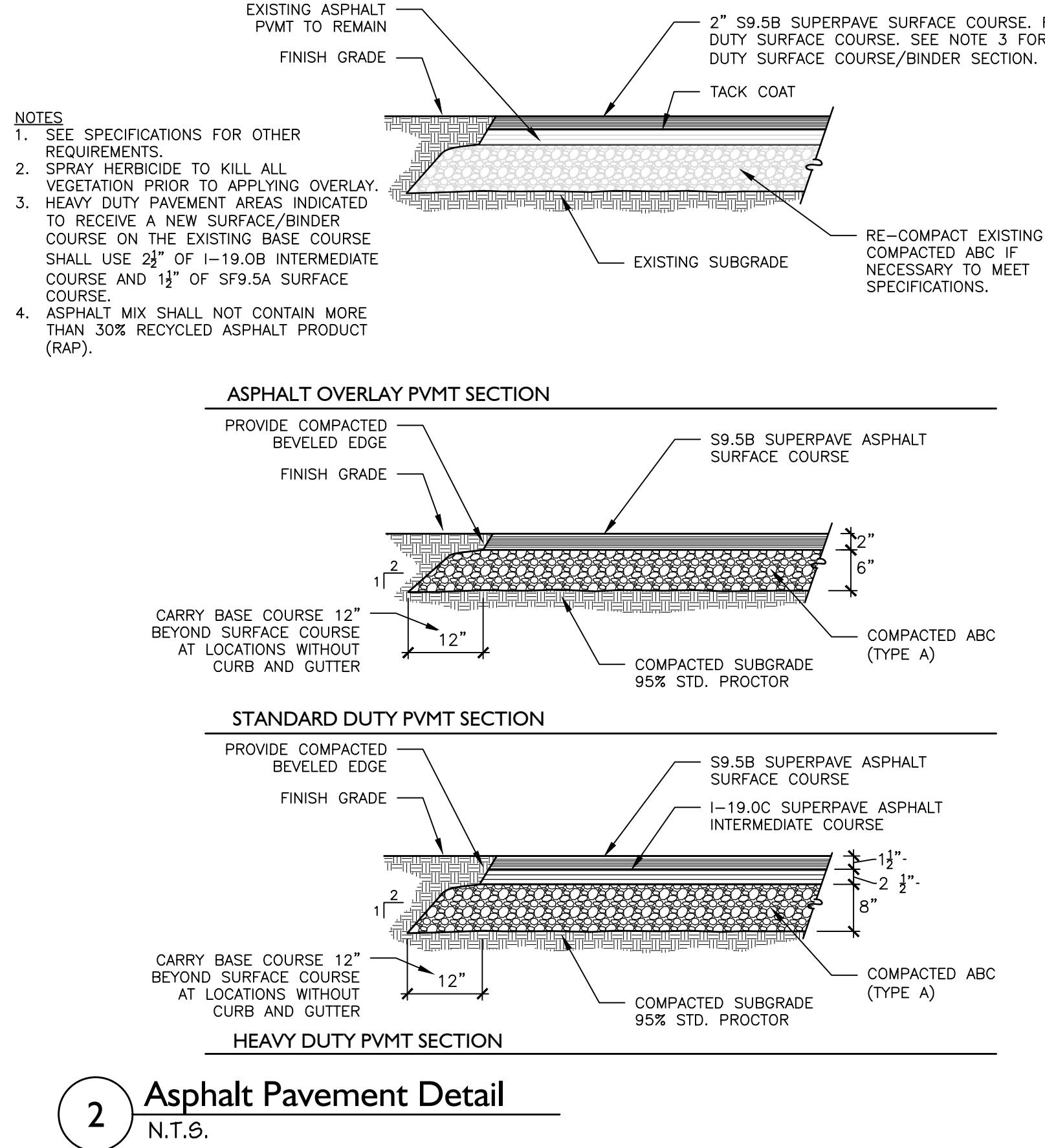
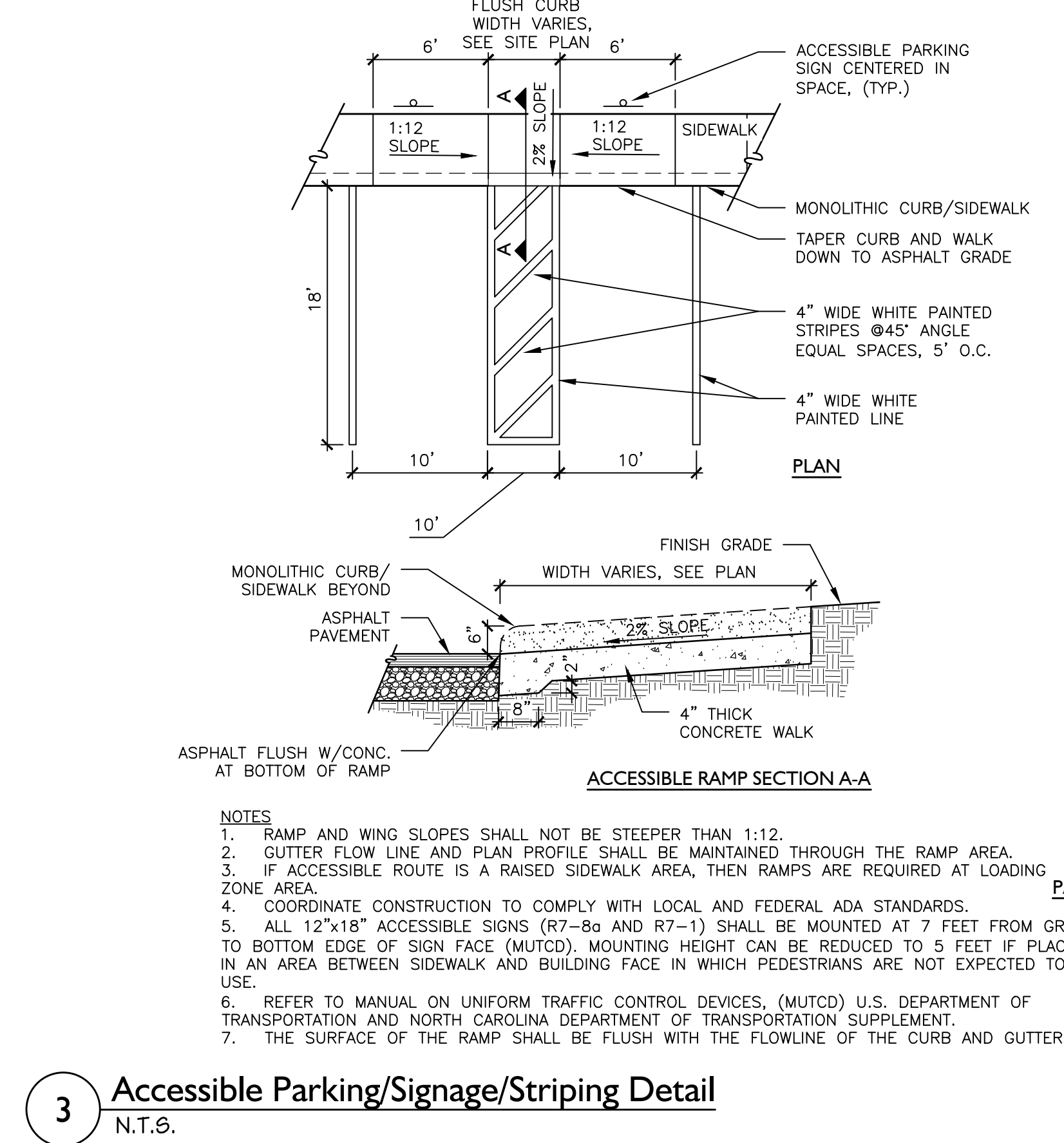


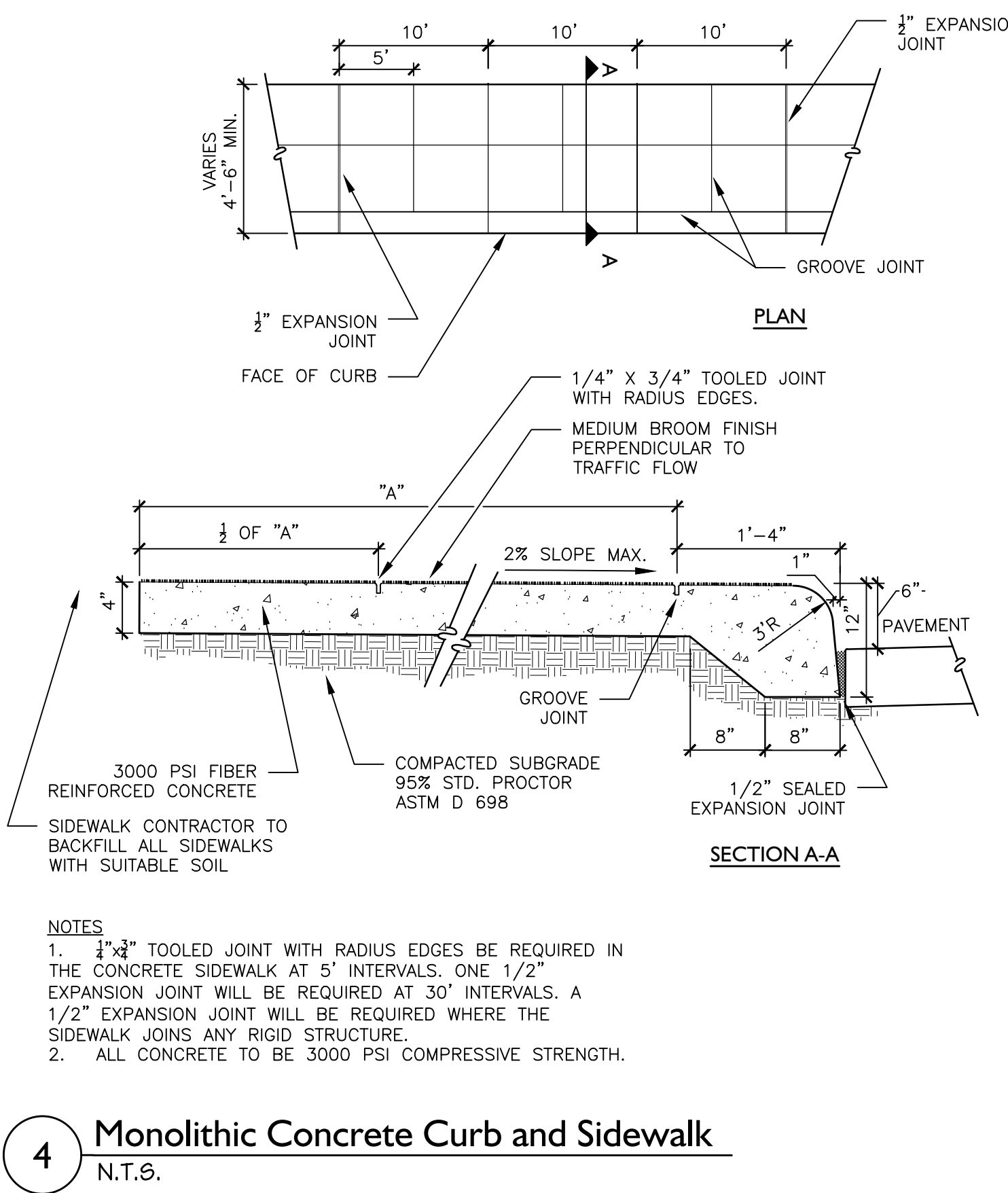
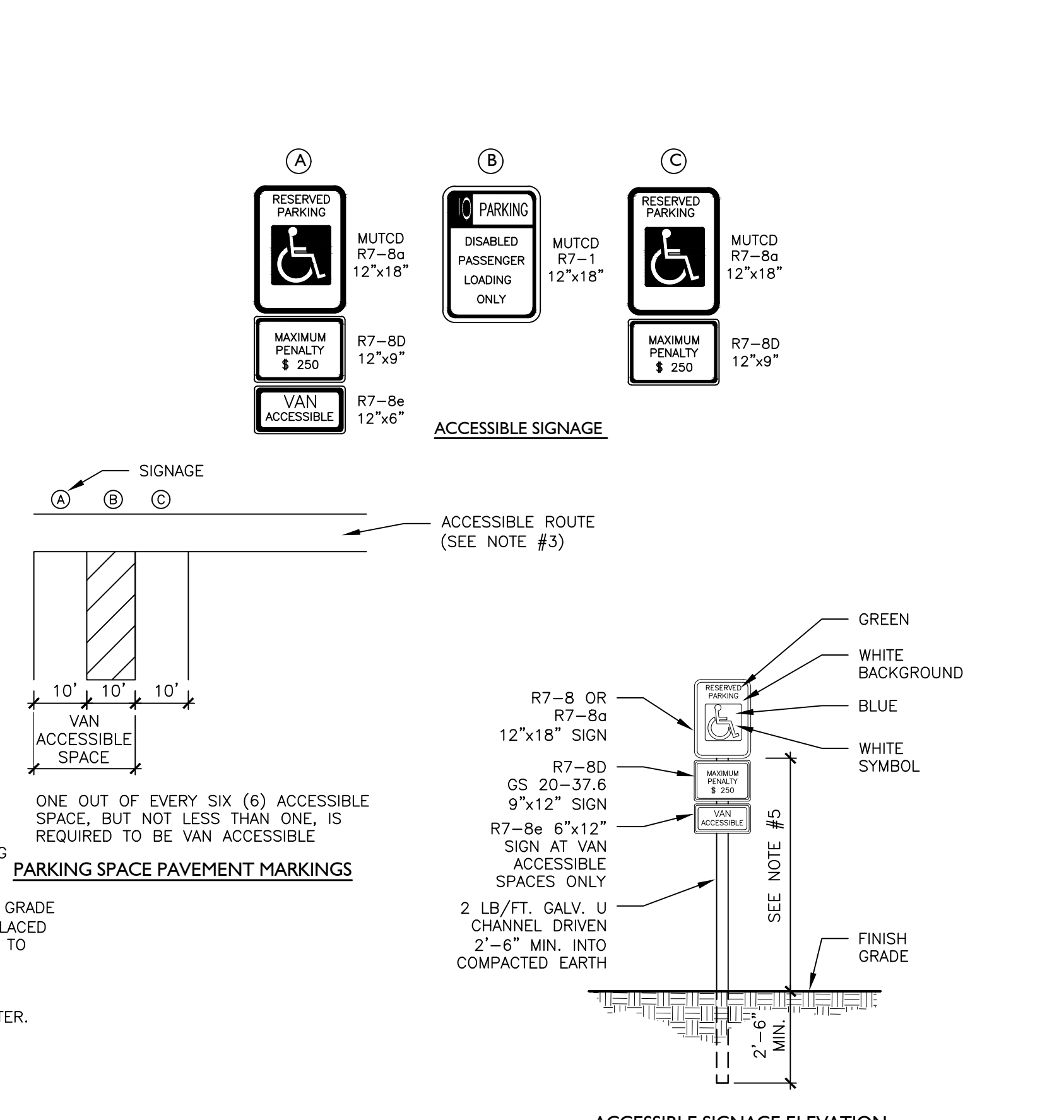
1 Concrete Sidewalk Detail  
N.T.S.



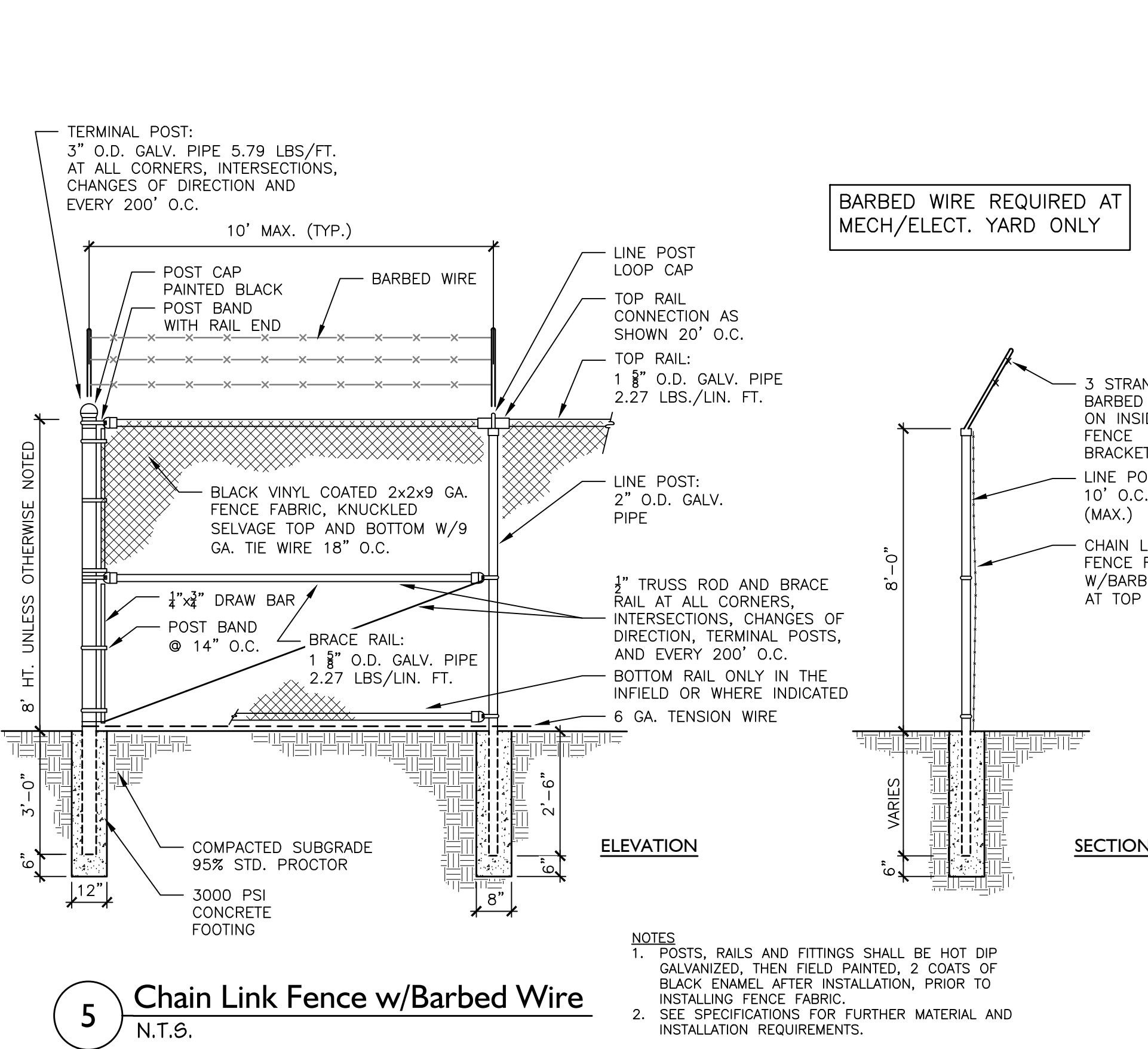
2 Asphalt Pavement Detail  
N.T.S.



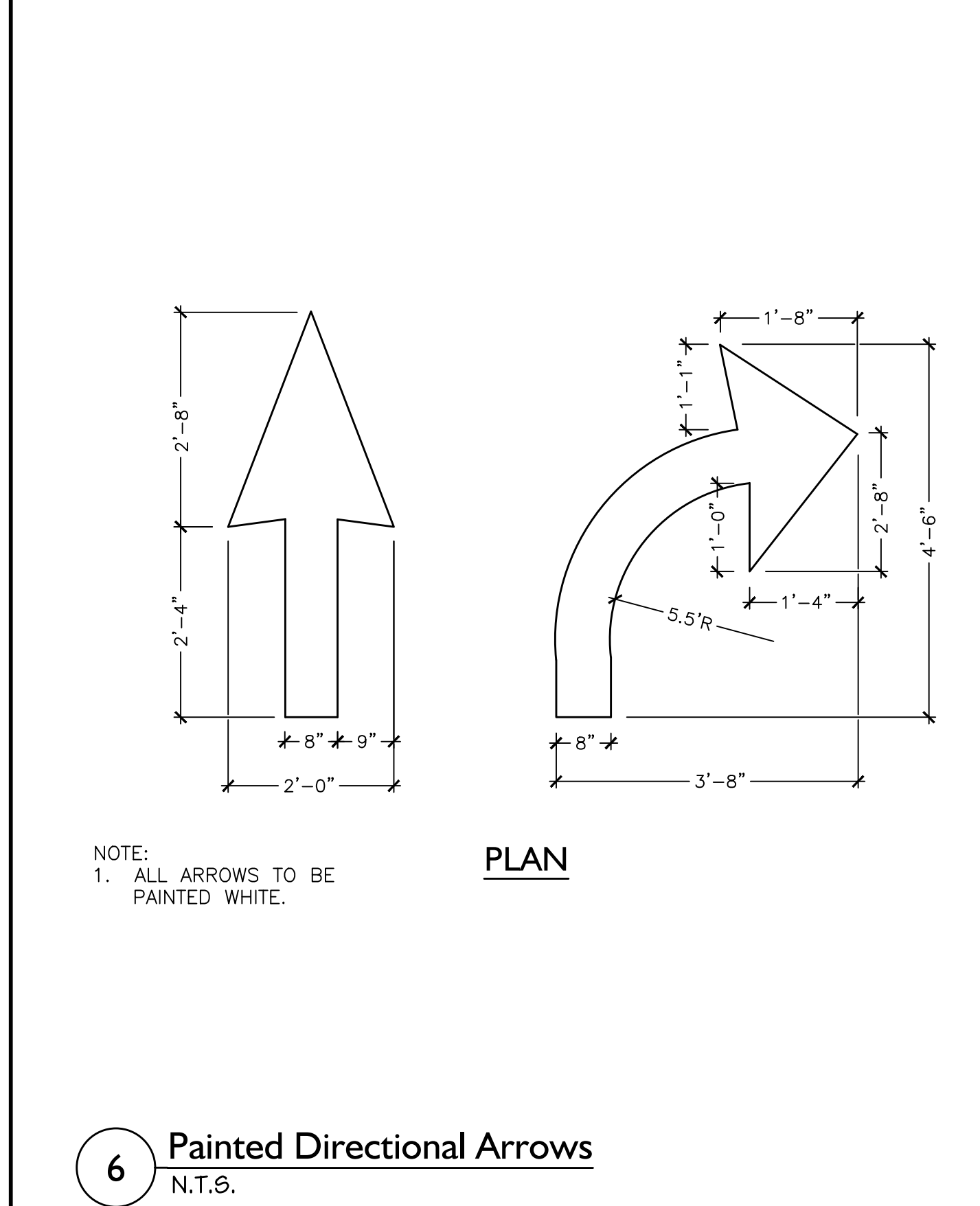
3 Accessible Parking/Signage/Striping Detail  
N.T.S.



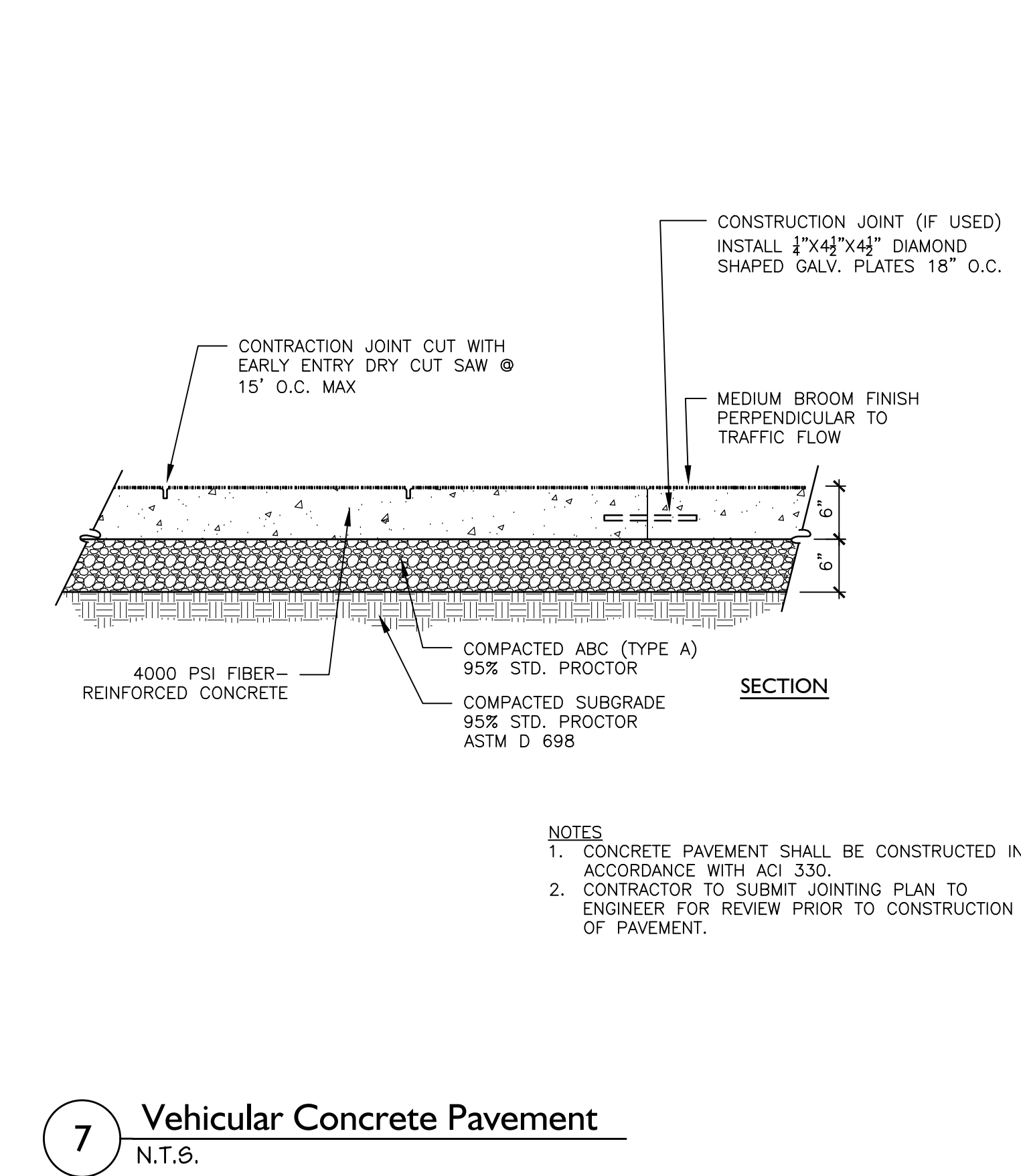
4 Monolithic Concrete Curb and Sidewalk  
N.T.S.



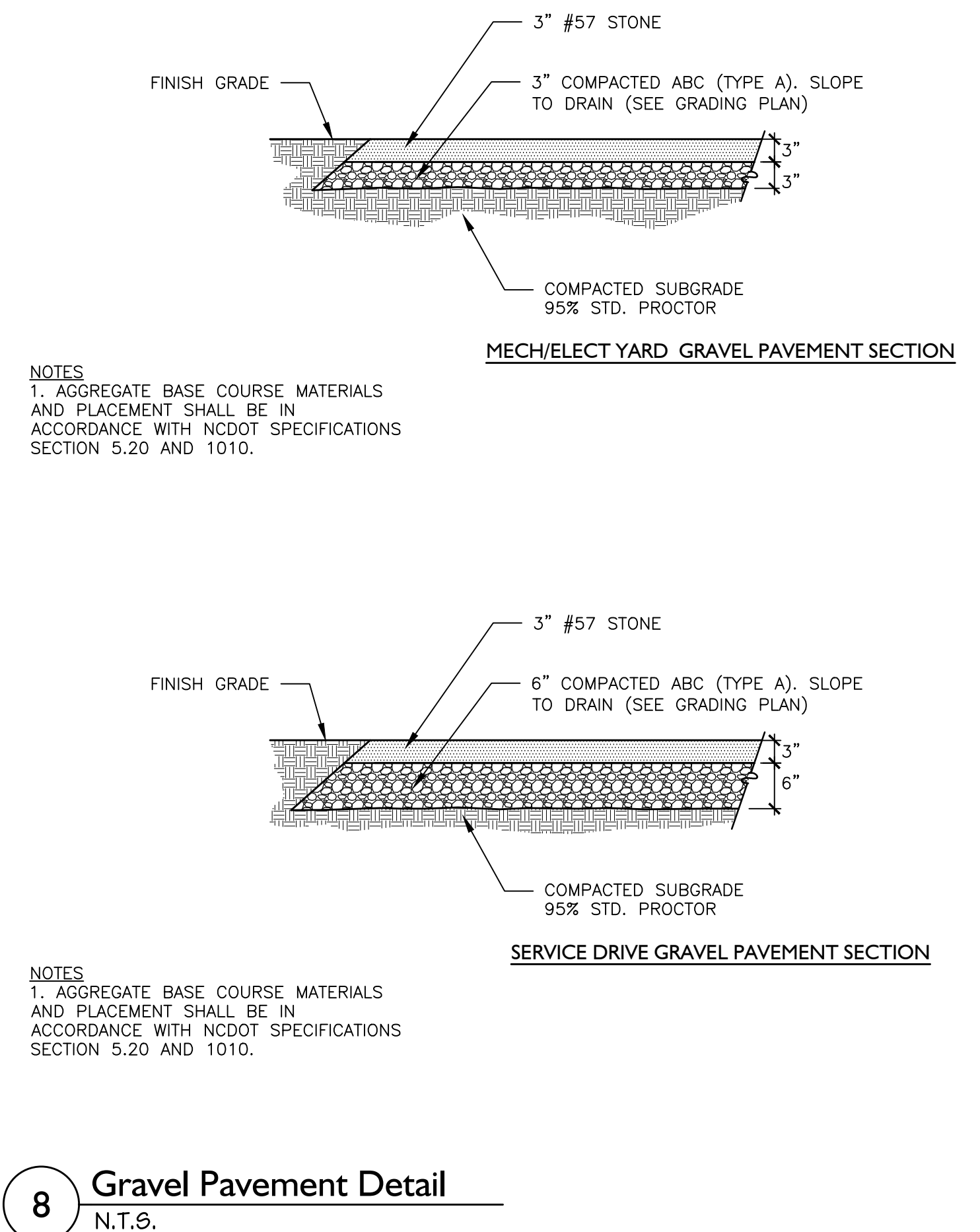
5 Chain Link Fence w/Barbed Wire  
N.T.S.



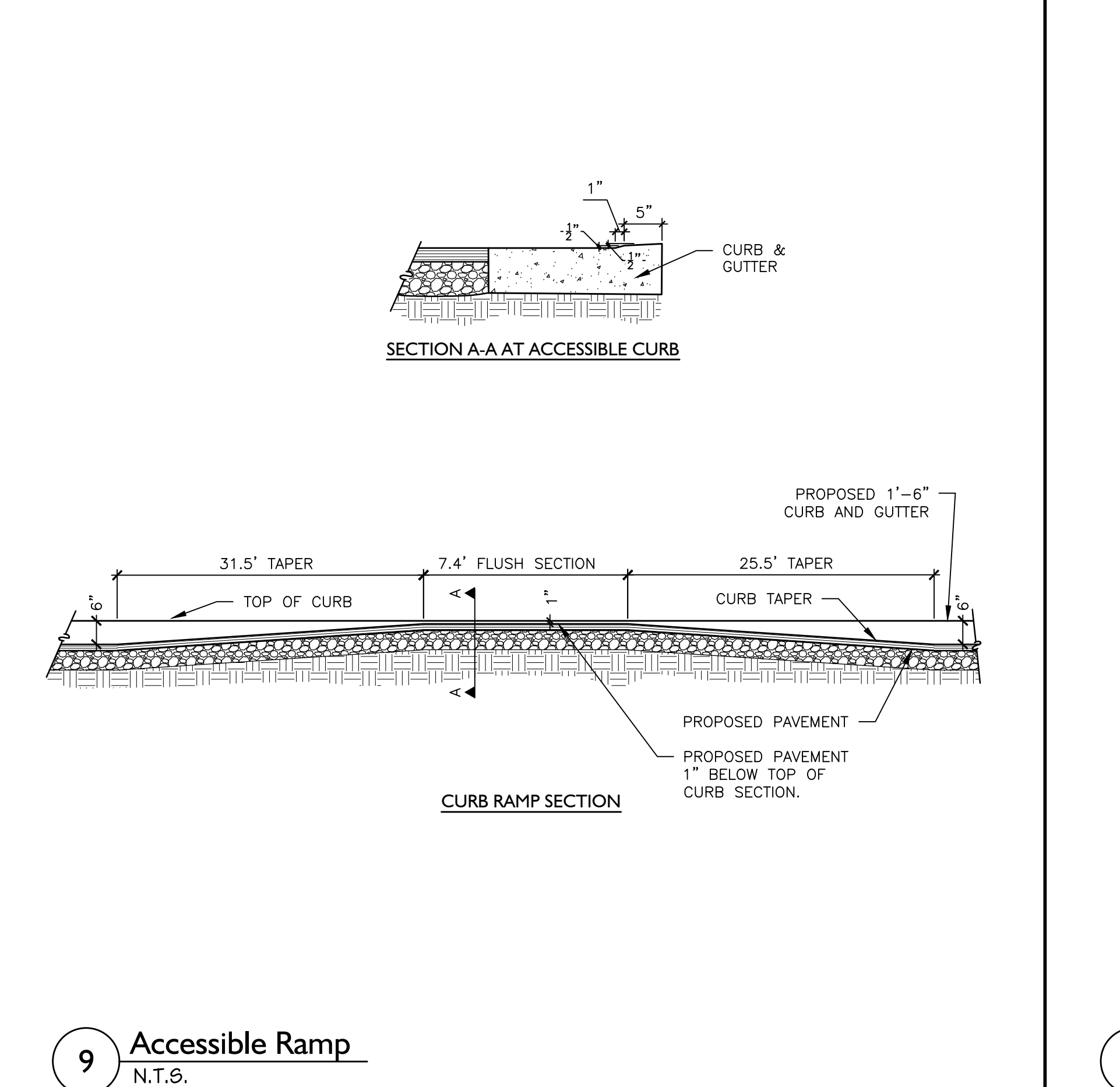
6 Painted Directional Arrows  
N.T.S.



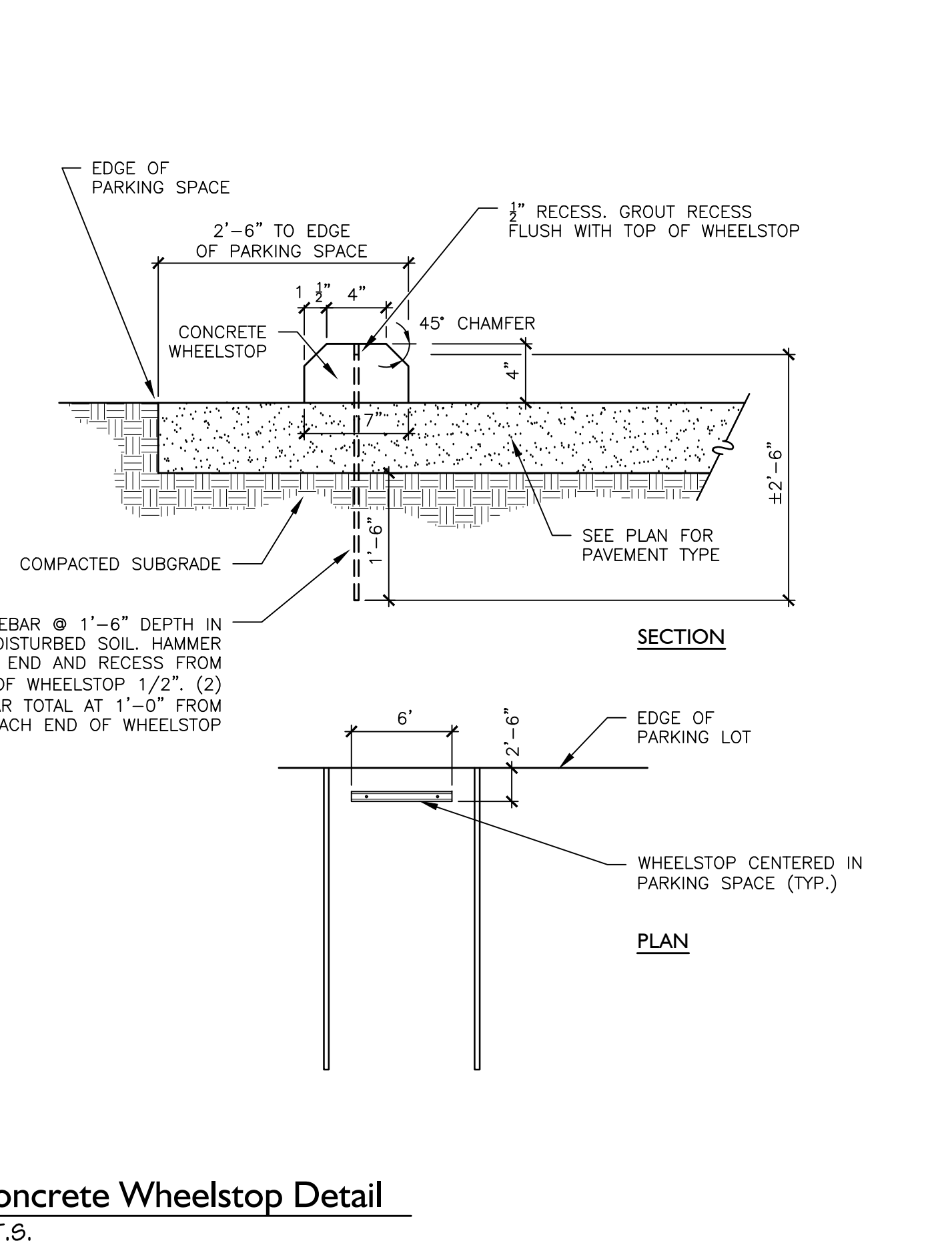
7 Vehicular Concrete Pavement  
N.T.S.



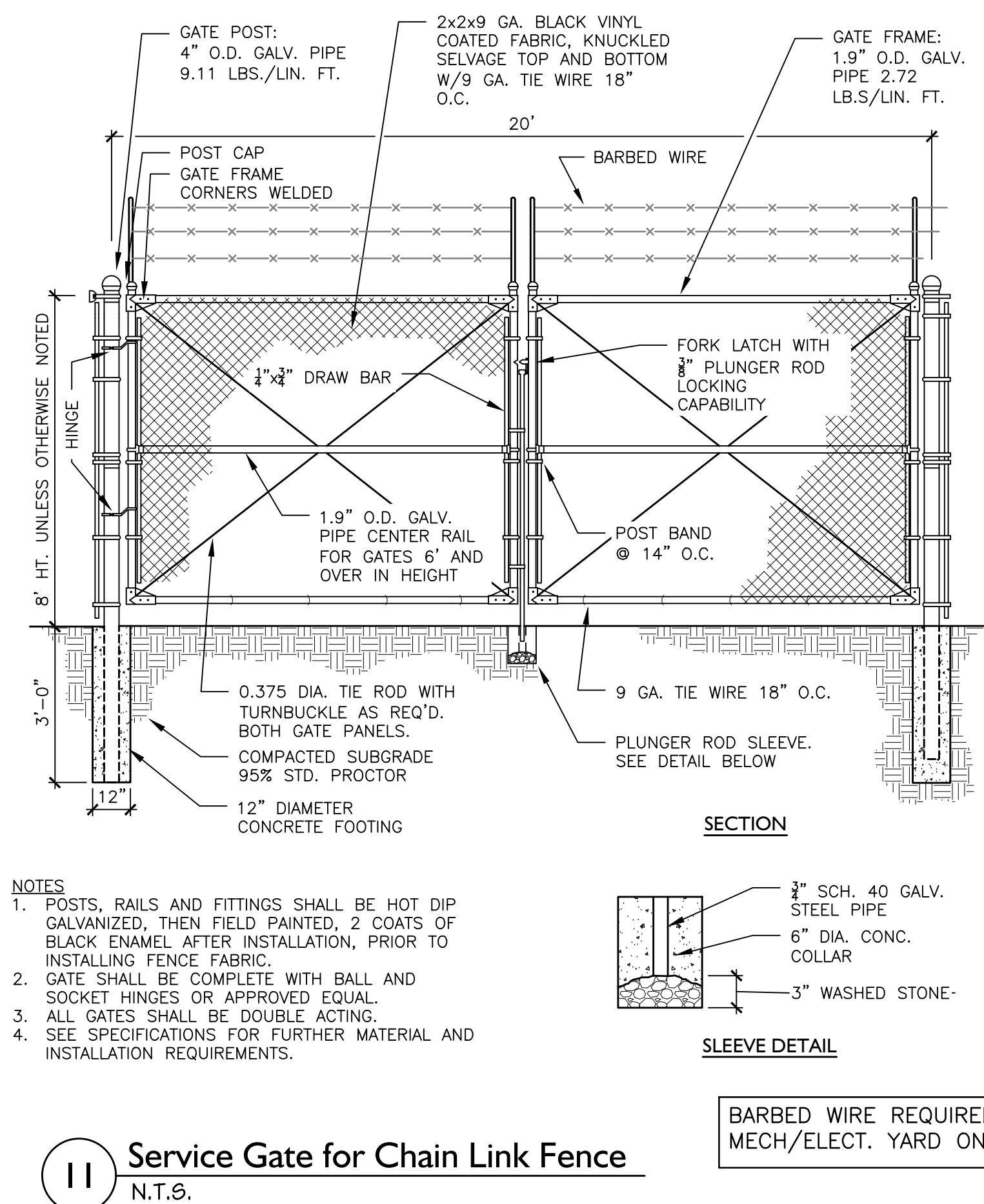
8 Gravel Pavement Detail  
N.T.S.



9 Accessible Ramp  
N.T.S.



10 Concrete Wheelstop Detail  
N.T.S.



11 Service Gate for Chain Link Fence  
N.T.S.

SAMPSON  
COUNTY  
911 & ES  
FACILITIES

CLINTON,  
NORTH CAROLINA

CONSTRUCTION  
DOCUMENTS

SITE  
CONSTRUCTION  
DETAILS

DATE 12.04.2020  
PROJECT NO 20003  
REVISIONS  
NUM. DATE DESCRIPTION:

THIS DRAWING IS THE PROPERTY OF ADW ARCHITECTS, P.A. AND SHALL NOT BE REPRODUCED OR COPIED IN WHOLE OR IN PART. IT SHALL NOT BE USED ON ANY OTHER PROJECT OR GIVEN TO ANY OTHER COMPANY OR AGENCY WITHOUT THE CONSENT OF ADW ARCHITECTS, P.A.

Seal of the State of North Carolina  
Professional Engineer  
WILEY E. SHERRELL  
15471  
12/4/20

SEAL

SHEET NUMBER C502